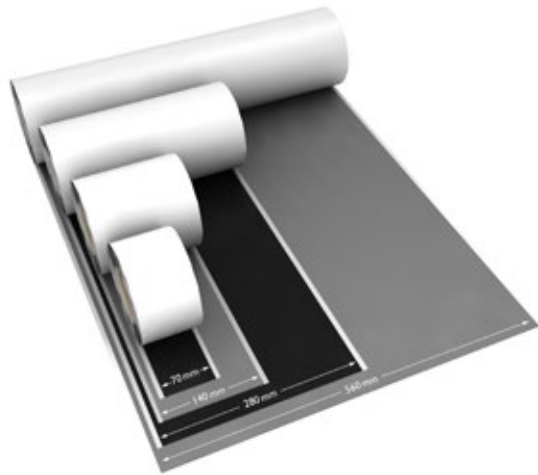


WRAPTEC IS AVAILABLE IN TWO COLOURS: ANTHRACITE AND LIGHT-GREY. ROLLS ARE AVAILABLE IN 10 M LENGTH AND MULTIPLE WIDTHS.



PRODUCT DATA

Material	High performance polymer (Polyisobutylene)
Application	Cladding / jacketing / sealing of HVAC ducts, pipes and technical insulations
Widths	70 mm, 140 mm, 280 mm, 560 mm
Length	10 m per roll
Application temperature	+5 °C up to +40 °C
Heat resistance	-40 °C up to +100 °C
Fire class	E (B2) (DIN EN ISO 11925-2 / DIN EN ISO 13501-1/ DIN 4102)
Connections	By self-welding
Weight	Ca. 1.85 kg/m ² 1.31 kg (per 70 mm roll) 2.63 kg (per 140 mm roll) 5.25 kg (per 280 mm roll) 10.50 kg (per 560 mm roll)
Thickness	Ca. 1.05mm
Stability (UV)	DIN 16726 (DIN EN ISO 20811)
Water column	> 7.5 m (DIN EN ISO 20811)
Vapour permeability	sd > 400 m; μ > 400,000 (DIN EN ISO 1931)
Storage	Dry up to +40°C



Monier is committed to continuously enhancing and improving our product range. Monier reserves the right to change our product specifications and the right to correct any typographical or clerical error or omission.

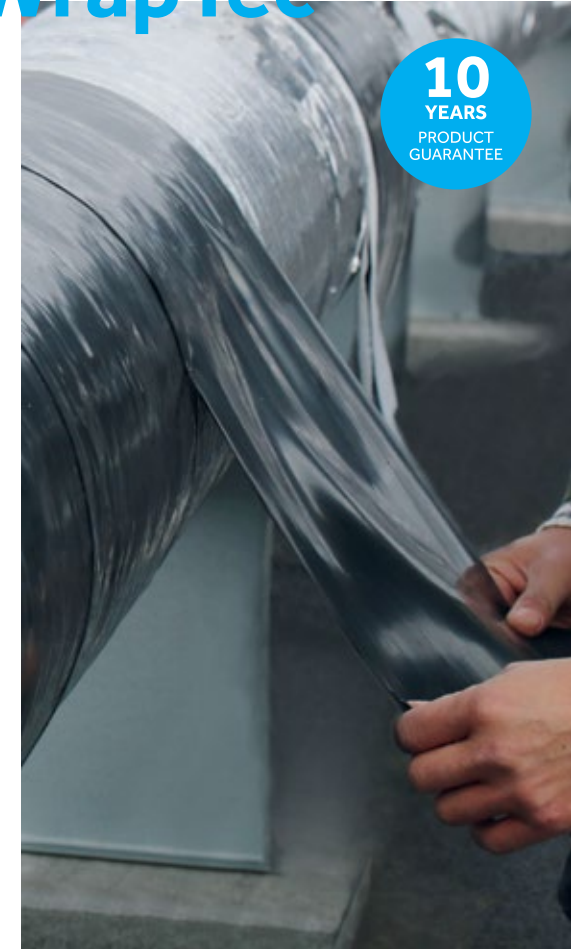
For further information please contact:

BMI Group
BMI Steildach GmbH
Frankfurter Landstrasse 2-4
61440 Oberursel, Germany

www.wraptec.net

WrapTec®

10
YEARS
PRODUCT
GUARANTEE



Universal cladding and jacketing solution for insulated HVAC ducts and pipes

www.wraptec.net

LF-EN-12/2020

WrapTec®

QUALITY AND EFFICIENCY

WrapTec is a new material for sealings in the area of technical insulation. The unique self-welding characteristic allows fast and easy installations at any construction site. The high performance material provides extreme UV stability and weather resistance in all environments. Due to its absolute water and humidity tight sealing it prevents corrosion under insulation (CUI) at the duct pipe.



More than 20 years of proven sealing experience and know-how in the construction industry has led to this new innovative solution.

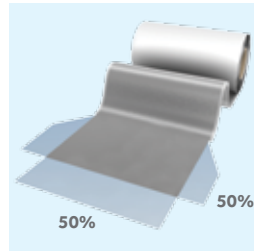
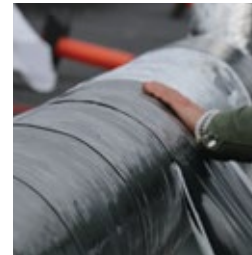
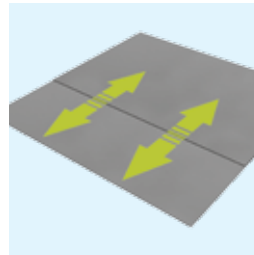
PRODUCT ADVANTAGES

WrapTec - Innovative and reliable

- is 100 % watertight
- is self-welding
- is extreme UV- and weather resistant
- Saves up to 50 % of labour costs compared to other installation coverings. Is easy and safe to install (requires no tools apart from scissors)
- Protects the duct work from corrosion under insulation (CUI)
- Offers various opportunities for usage due to environmental friendly recipe
- Saves storage costs and simplifies transport to and on building sites



An overlap of only 20mm is sufficient in order to provide protection to the insulation and duct system itself. WrapTec can be stretched by 50 % in all directions to ensure a proper and aesthetic installation.



The high performance material ensures environmental friendliness for all usage areas. The material is 100 % recyclable.

